

Lean on Me

Bill Withers
Arr. Ryan Welsh

Moderato

Violin

Violin II

Viola

Violoncello

Double Bass

The score for the instrumental section is in 4/4 time. The Violin and Violin II parts play a melodic line of eighth notes: G4, A4, B4, C5, B4, A4, G4. The Viola part plays a similar line but with a lower octave. The Violoncello and Double Bass parts play a bass line of eighth notes: G2, A2, B2, C3, B2, A2, G2.

4

Some - times in our lives — we all have pain. — we all have

Some - times in our lives — we all have pain. — we all have

Some - times in our lives — we all have pain. — we all have

Some - times in our lives — we all have pain. — we all have

Some - times in our lives — we all have pain. — we all have

The score for the vocal and piano accompaniment is in 4/4 time. The vocal line consists of the lyrics: "Some - times in our lives — we all have pain. — we all have". The piano accompaniment features a melodic line in the right hand and a bass line in the left hand, both playing eighth notes. The right hand line is: G4, A4, B4, C5, B4, A4, G4. The left hand line is: G2, A2, B2, C3, B2, A2, G2.

9

sor- row, but if we are wise, we know that there's al-ways to mor
 sor- row, but if we are wise, we know that there's al-ways to mor
 sor- row, but if we are wise, we know that there's al-ways to mor
 sor- row, but if we are wise, we know that there's al-ways to mor
 sor- row, but if we are wise, we know that there's al-ways to mor

13

- row... Lean on me, when you're not strong and I'll be your friend
 - row... when you're not strong I'll be your friend
 - row... when you're not strong I'll be your friend
 - row... when you're not strong I'll be your friend
 - row... when you're not strong I'll be your friend

16

— I'll help you car-ry on— for it won't be long— till I'm gon-na need

— I'll help you car-ry on— for it won't be long— till I'm gon-na need

— I'll help you car-ry on— for it won't be long— till I'm gon-na need

— I'll help you car-ry on— for it won't be long— till I'm gon-na need

— I'll help you car-ry on— for it won't be long— till I'm gon-na need

20

— Some bo-dy to lean_ on Please swal-low your pride— If I have things

— Some bo-dy to lean_ on Please swal-low your pride— If I have things

— Some bo-dy to lean_ on Please swal-low your pride— If I have things

— Some bo-dy to lean_ on Please swal-low your pride— If I have things

— Some bo-dy to lean_ on Please swal-low your pride— If I have things

— you need to bor - row_ For no one can fill_ those of your needs

— you need to bor - row_ For no one can fill_ those of your needs

— you need to bor - row_ For no one can fill_ those of your needs

— you need to bor - row_ For no one can fill_ those of your needs

— you need to bor - row_ For no one can fill_ those of your needs

— that you won't let_ show you just call on me bro-ther when you need a hand We all_

— that you won't let_ show you just call on me bro-ther when you need a hand We all_

— that you won't let_ show you just call on me bro-ther when you need a hand We all_

— that you won't let_ show you just call on me bro-ther when you need a hand We all_

— that you won't let_ show you just call on me bro-ther when you need a hand We all_

32

need some-bo-dy to lean on I just might have a prob-lem that you'll un-der stand We all_

need some-bo-dy to lean on I just might have a prob-lem that you'll un-der stand We all_

need some-bo-dy to lean on I just might have a prob-lem that you'll un-der stand We all_

need some-bo-dy to lean on I just might have a prob-lem that you'll un-der stand We all_

need some-bo-dy to lean on I just might have a prob-lem that you'll un-der stand We all_

36

need some-bo - dy to lean on Lean on me when you're not strong

need some-bo - dy to lean on lean when you're not strong

need some-bo - dy to lean on lean when you're not strong

need some-bo - dy to lean on lean on me when you're not strong

need some- lean on me when you're not strong

39

— and I'll be your friend — I'll help you car-ry on — for it won't be long

— and I'll be your friend — I'll help you car-ry on — for it won't be long

— and I'll be your friend — I'll help you car-ry on — for it won't be long

— and I'll be your friend — I'll help you car-ry on — for it won't be long

— and I'll be your friend — I'll help you car-ry on — for it won't be long

43

— till I'm gon-na need — Some bo-dy to lean on you just call on me bro-ther when

— till I'm gon-na need — Some bo-dy to lean on you just call on me bro-ther when

— till I'm gon-na need — Some bo-dy to lean on you just call on me bro-ther when

— till I'm gon-na need — Some bo-dy to lean on you just call on me bro-ther when

— till I'm gon-na need — Some bo-dy to lean on

47

you need a hand We all need some-bo - dy to lean on I just

you need a hand We all need some-bo - dy to lean on I just

you need a hand We all need some-bo - dy to lean on I just

you need a hand We all need some-bo - dy to lean on I just

you need a hand We all need some-bo - dy to lean on I just

50

might have a prob-lem that you'll un-der stand We all need some-bo - dy to lean

might have a prob-lem that you'll un-der stand We all need some-bo - dy to lean

might have a prob-lem that you'll un-der stand We all need some-bo - dy to lean

might have a prob-lem that you'll un-der stand We all need some-bo - dy to lean

might have a prob-lem that you'll un-der stand We all need some-bo - dy to lean

53

on_ If there is a load_ you have to bear_ that you can't

on_ If there is a load_ you have to bear_ that you can't

on_ If there is a load_ you have to bear_ that you can't

on_ If there is a load_ you have to bear_ that you can't

If there is a load_ you have to bear_ that you can't

57

car - ry_ I'm right up the road_ I'll share your load_ if you just call

car - ry_ I'm right up the road_ I'll share your load_ if you just call

car - ry_ I'm right up the road_ I'll share your load_ if you just call

car - ry_ I'm right up the road_ I'll share your load_ if you just call

car - ry_ I'm right up the road_ I'll share your load_ if you just call

61

repeat 10x and fade.....

_____ me call me Oh call me oh

Violin

Lean on Me

Bill Withers
Arr. Ryan Welsh

Moderato



6

Some - times in our lives___ we all have pain.___ we all have sor - row, -

10

but if we are wise,___ we know that there's___ al-ways to-mor - row. Lean on me,

14

___ when you're not strong___ and I'll be your friend___ I'll help you car - ry on___

18

for it won't be long___ till I'm gon-na need___ Some bo-dy to lean___ on

22

Please swal-low your pride___ If I have things___ you need to bor - row_

26

For no one can fill___ those of your needs___ that you won't show you just

30



call on me bro-ther when you need a hand We all_ need some-bo dy to lean_____ on_ I just

34



might have a prob-lem that you'll un-der-stand We all_ need some-bo dy to lean_____ on_ Lean on me

38



_____ when you're not strong_____ and I'll be your friend_____ I'll help you car - ry on_____

42



for it won't be long_____ till I'm gon-na need_____ Some bo-dy to lean_ on_ you just

46



call on me bro-ther when you need a hand We all_ need some-bo dy to lean_____ on_ I just

50



might have a prob-lem that you'll un-der-stand We all_ need some-bo dy to lean_____ on_

54



If there is a load_____ you have to bear_____ that you can't car - ry_____

58



I'm right up the road_____ I'll share your load_____ if you just call_____

61

repeat 10x and fade.....



_____ me_____ call_____ me_____ Oh call_____ me_____ oh

Violin II

Lean on Me

Bill Withers
Arr. Ryan Welsh

Moderato



6
Some - times in our lives___ we all have pain.___ we all have sor - row, -

10
but if we are wise,___ we know that there's___ al-ways to - mor - row.

14
when you're not strong___ I'll be your friend___ I'll help you car - ry on___

18
for it won't be long___ till'm gon-na need___ Some bo-dy to lean___ on

22
Please swal-low your pride___ If I have things___ you need to bor - row___

26
For no one can fill___ those of your needs___ that you won't let___ show you just

30



call on me bro-ther when you need a hand We all_ need some-bo dy to lean_____ on_ I just

34



might have a prob-lem that you'll un-der-stand We all_ need some-bo-dy to lean_____ on_

38



lean when you're not strong___ and'll be your friend___ I'll help you car - ry on___

42



for it won't be long___ till'm gon-na need___ Some-bo-dy to lean___ on you just

46



call on me bro-ther when you need a hand We all_ need some-bo dy to lean_____ on_ I just

50



might have a prob-lem that you'll un-der-stand We all_ need some-bo-dy to lean_____ on_

54




If there is a load___ you have to bear___ that you can't car - ry___

58



I'm right up the road___ I'll share your load___ if you just call_

61



me call___ me___ call___ me___

Viola

Lean on Me

Bill Withers
Arr. Ryan Welsh

Moderato



6

Some - times in our lives___ we all have pain.___ we all have sor - row, -

10

but if we are wise,___ we know that there's___ al-ways to mor - row.

14

when you're not strong___ I'll be your friend___ I'll help you car - ry on___

18

for it won't be long___ till'm gon-na need___ Some bo-dy to lean___ on

22

Please swal-low your pride___ If I have things___ you need to bor - row___

26

For no one can fill___ those of your needs___ that you won't let___ show you just

30



call on me bro-ther when you need a hand We all_ need some-bo dy to lean_____ on_ I just

34



might have a prob-lem that you'll un-der-stand We all_ need some-bo dy to lean_____ on_

38



lean when you're not strong___ and'll be your friend___ I'll help you car - ry on___

42



for it won't be long___ till'm gon-na need___ Some-bo dy to lean_ on you just

46



call on me bro-ther when you need a hand We all_ need some-bo dy to lean_____ on_ I just

50



might have a prob-lem that you'll un-der-stand We all_ need some-bo dy to lean_____ on_

54




If there is a load___ you have to bear___ that you can't car - ry___

58



I'm right up the road___ I'll share your load___ if you just call

61



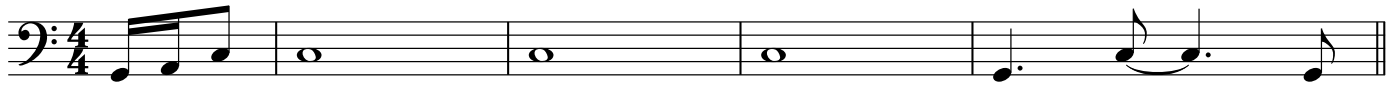
_____ me call___ me call___ me___

Violoncello

Lean on Me

Bill Withers
Arr. Ryan Welsh

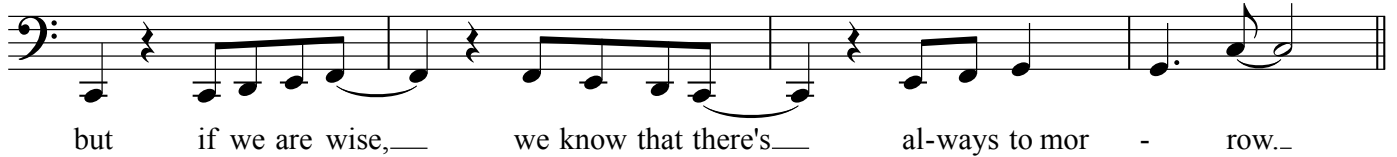
Moderato



6



10



14



18



22



26



30



call on me bro-ther when you need a hand We all_ need some-bo dy to lean_____ on_ I just

34



might have a prob-lem that you'll un-der-stand We all_ need some-bo-dy to lean_____ on_

38



lean on me when you're not strong_____ and I'll be your friend_____ I'll help you

41



car-ry on_____ for it won't be long_____ till'm gon-na need_____ Some-dy to

45



lean_on you just call on me bro-ther when you need a hand We all_ need some-bo dy to lean

49



_____ on_ I just might have a prob-lem that you'll un-der-stand We all_ need some-bo-dy to lean

53



_____ on_ If there is a load_____ you have to bear_____ that you can't car-ry_

58



I'm right up the road_____ I'll share your load_____ if you just call

61



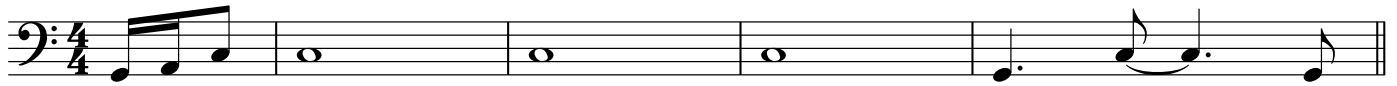
_____ me call me Oh call me oh

Double Bass

Lean on Me

Bill Withers
Arr. Ryan Welsh

Moderato



6

Some - times in our lives___ we all have pain.___ we all have sor - row,

10

but if we are wise,___ we know that there's___ al-ways to mor - row.

14

when you're not strong___ I'll be your friend___ I'll help you car-ry on___

18

for it won't be long___ till'm gon-na need___ Some bo-dy to lean_on

22

Please swal-low your pride___ If I have things___ you need to bor - row

26

For no one can fill___ those of your needs___ that you won't let___ show you just

30



call on me bro-ther when you need a hand We all_ need some-bo dy to lean_____ on_ I just

34



might have a prob-lem that you'll un-der-stand We all_ need some

38



lean on me when you're not strong___ and I'll be your friend___ I'll help you

41



car-ry on___ for it won't be long___ till'm gon-na need___ Some-dy to

45



lean_on

49



53



If there is a load___ you have to bear___ that you can't car-ry_

58



I'm right up the road___ I'll share your load___ if you just call

61



_____ me call me Oh call me oh